



**42 MONTE VISTA TRAIL, BRAMPTON**  
SANDALWOOD PARKWAY AND KENNEDY ROAD



[www.AccessibleHomeFinder.com](http://www.AccessibleHomeFinder.com)

**JEFFREY KERR, BROKER**

Direct: 416.424.2222

Office: 416.928.6693 ext. 336

info@AccessibleHomeFinder.com

**RE/MAX**

*Unique Inc., Brokerage*

1251 Yonge St, Toronto ON M4T 1W6





# MAIN FLOOR

42 MONTE VISTA TRAIL, BRAMPTON



GRAND FOYER



LIVING ROOM



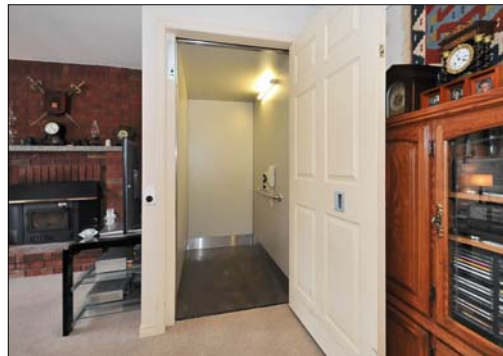
DINING ROOM



KITCHEN



FAMILY ROOM WITH ELEVATOR



PLATFORM LIFT FROM GARAGE

JEFFREY KERR, BROKER RE/MAX Unique Inc., Brokerage  
Direct: 416.424.2222 Office: 416.928.6693 ext. 336  
info@AccessibleHomeFinder.com

[www.AccessibleHomeFinder.com](http://www.AccessibleHomeFinder.com)



# SECOND FLOOR

42 MONTE VISTA TRAIL, BRAMPTON



ACCESSIBLE MASTER BEDROOM SUITE WITH ELEVATOR AND ROLL IN SHOWER



ADDITIONAL BEDROOM CONNECTED TO MASTER BEDROOM



BEDROOM



WALK OUT LOWER LEVEL WITH ELEVATOR



JEFFREY KERR, BROKER RE/MAX Unique Inc., Brokerage  
Direct: 416.424.2222 Office: 416.928.6693 ext. 336  
info@AccessibleHomeFinder.com

[www.AccessibleHomeFinder.com](http://www.AccessibleHomeFinder.com)